

This guide was downloaded from www.participationworks.org.uk
Participation Works is an online gateway to the world of children and young people's participation.

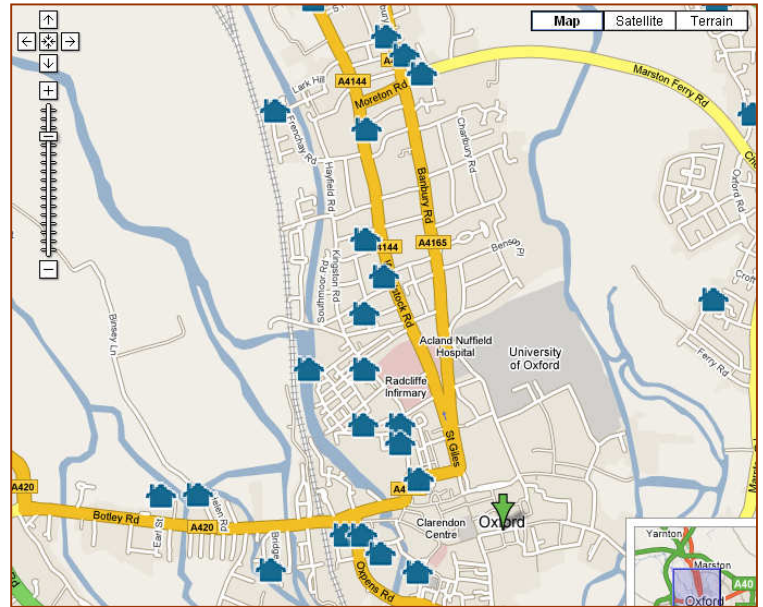
Custom Online Maps

With Google Maps (maps.google.com)

Interactive online maps allow you to **annotate a map or Arial photo of your local area**.

You might use this to **shared your photos of the local area, provide local information or find out what people think of facilities and activities available in the area**.

You can **share your customized map on the web or through a 3D mapping program**.



Getting Started

Visit <http://maps.google.com> and select 'My Maps'. Follow the instructions below to sign in and get started

1) Select My Maps and create a new map

2) Give you map a title and description

3) Use the drawing tools to annotate the map. You can include rich text and even embed photos and videos.

4) Select collaborate and choose the collaboration settings for your map

5) Share the map link with others so they can add their annotations

6) Open your map in 3D using Google Earth



This work is licenced under the Creative Commons Attribution-Share Alike 2.0 UK: England & Wales License. To view a copy of this licence, visit <http://creativecommons.org/licenses/by-sa/2.0/uk/>

Summary: You may freely use, adapt and share this document providing you credit Practical Participation including our URL: (www.practicalparticipation.co.uk) and use this licence for your work. Please also let us know about any adaptations or derivative works.